

# **Planning for Water, food, energy security Some Southern African experiences: hydro-centric vs hydro-supportive**

**Mike Muller**

**Visiting Professor,  
Witwatersrand University School of Governance  
Commissioner,  
National Planning Commission  
South Africa**

# **Planning for water or for development**

**Hydro-centric or hydro-supportive approaches to food, energy and water security?**

- **Get the geography right**
- **Respect political boundaries and other sectors**
- **Make coordination work between right parties**
- **Support, don't try to decide**
- **Some examples**
  - **Water Security: the Lesotho Highlands Water Project**
  - **Food Security: Malawi's Zambezi port**
  - **Energy security: Zambezi hydropower failures**
- **Some take-away lessons**

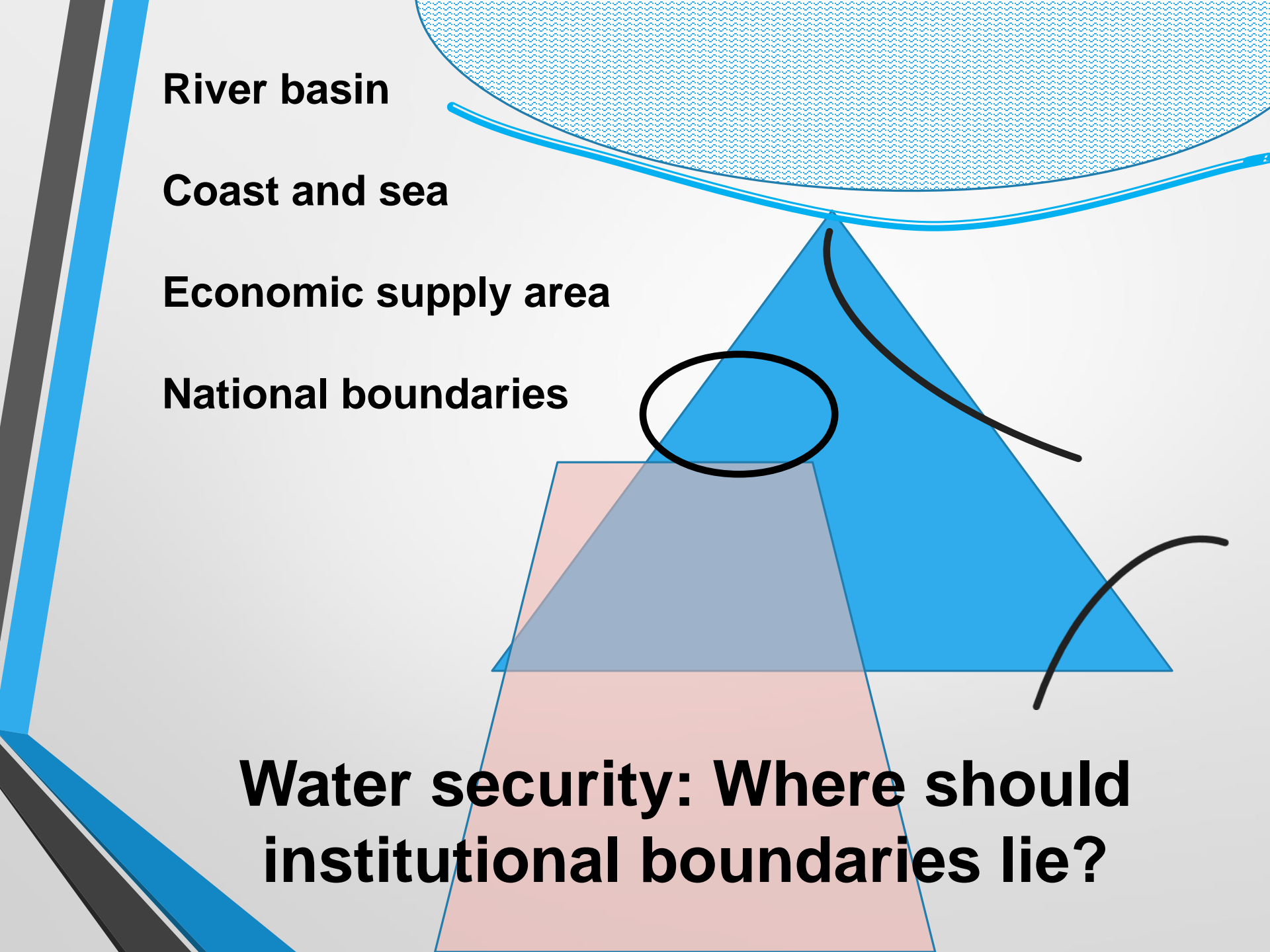
**River basin**

**Coast and sea**

**Economic supply area**

**National boundaries**

**Water security: Where should  
institutional boundaries lie?**



# Lesotho Highlands Water project

- Additional supply to Gauteng/Vaal supply area
- **Water security** for South Africa's economy
- Much outside the Orange/Vaal river basin
- Treated wastewater to energy projects in other basins
- Planning focus:
  - Economic and social drivers
  - Supply and conservation alternatives (other basins as well)
  - Recognise Lesotho's need for fiscal sources
  - Basin includes 2 other countries with no substantial interests
  - Implementation organisations bilateral SA/Lesotho
  - River basin organisation not involved





## Mozambique: Malawian Military Attache Detained, and Released

[Tweet](#)[Share](#)[Google+](#)[Email](#)[More](#)

Maputo — The Mozambican authorities have confirmed that the police did indeed arrest the Malawian military attaché, Colonel James Kalipinde, on the Shire river, in the centre of the country, on Friday - but let him go as soon as they realised he was a diplomat.

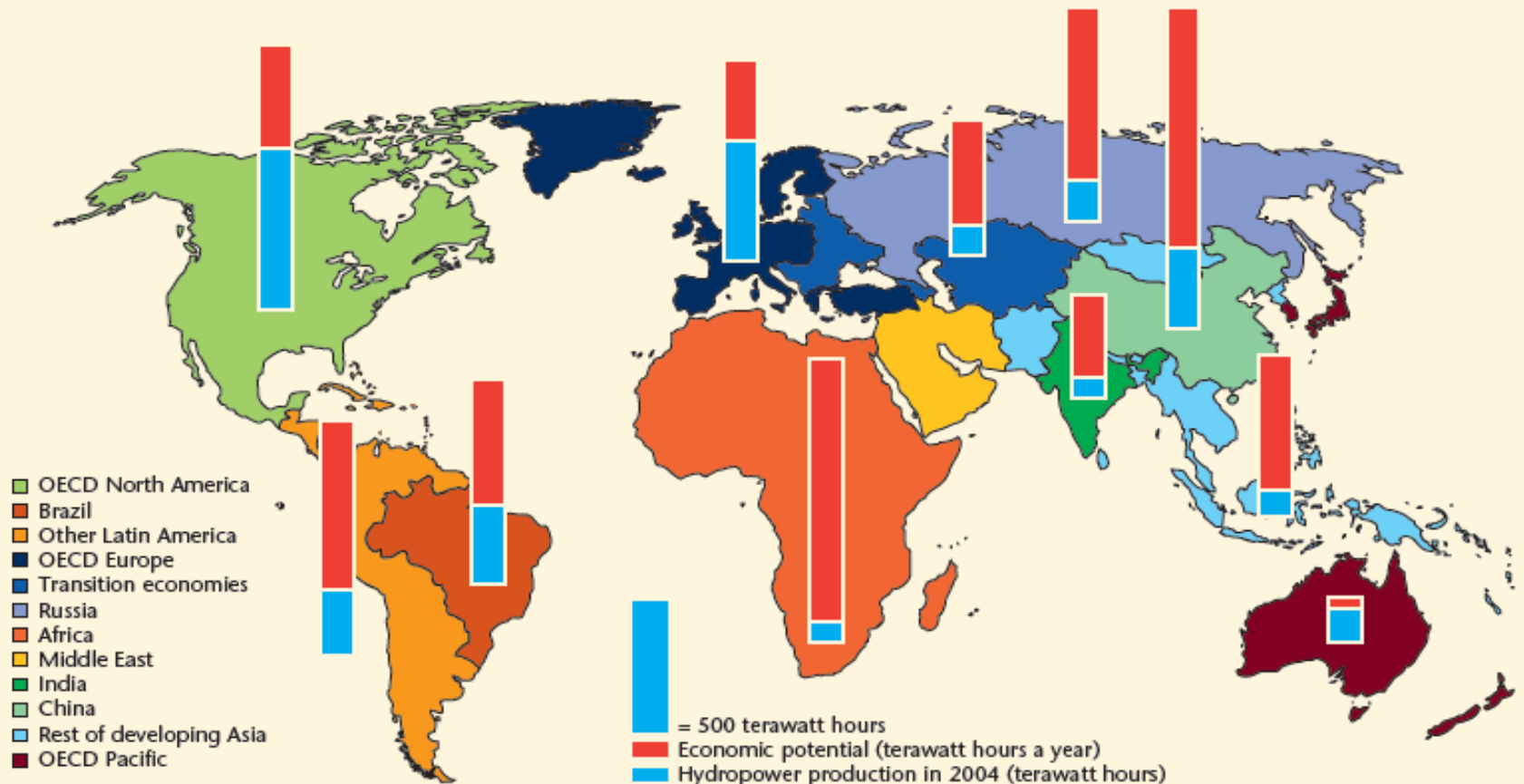
A spokesperson for the office of Mozambican President Armando Guebuza told AIM that Kalipinde was in a boat heading up the Zambezi and Shire rivers towards the Malawian river port of Nsanje.



# Malawi's navigation on Zambezi

- Most serious transboundary conflict in SADC for decade
- Malawi official arrested on river on way to port opening
- Port built on Zambezi tributary without Moz concurrence
- Mozambique building rail and port to export coal, will open agricultural opportunities and **support food security**
- Offered Malawi participation and access to sea
- ZAMCOM played no significant role
- Multi-sector development planning problem not just water issue
- Needed bilateral political engagement, inter-sectoral structures

# World potential and current hydropower production, 2004



# Zambezi: failure to mobilise hydropower

- Zambezi hydropower a political goal since SADCC 1980
- Substantial potential identified
- Region's best potential source of (clean) energy security
- Demand projected to exceed supply in 2007
- No agreements between potential producers and users
- Feasibility and design started too late
- Basin planning failed to engage with opportunities
- Electricity planning not coordinated with water
- Loss of trust set back regional integration a decade (SAPP)
- Needed inter-sectoral regional planning and coordination not river basin planning





**The result of poorly coordinated regional development planning – it should have been hydropower**

# Take-away lessons

- River basins seldom locus of development decision-making
- Sovereignty not delegated - development happens through coordination between national governments concerned
- River basin organisations can support with information & options and facilitate engagement where helpful
- Hydro-centric approaches are not helpful
  - development plans made for political geographies not river basins
- Hydro-supportive approaches are effective where they
  - Engage with water using sectors
  - provide sound technical basis
  - inform inter-sectoral national and regional development





**Thank you**